

**OUR STRENGTH IS YOUR SAFETY**

**PREVENT OBJECTS FALLING THROUGH FIELD CUT OPENINGS**

## TOEBOARD LINKS T5-J

**TOEBOARD LINKS** are an easy and effective way to neatly close field cut penetrations. This proven design is recommended by engineering and construction firms and has been successfully used for over 20 years by many multinational industrial companies.

### Key properties

- ✓ Neatly enclose field cut penetrations;
- ✓ Great for rework;
- ✓ Eliminates the need to weld banding or split oversize pipe;
- ✓ Can also be installed on molded GRP grating;
- ✓ Uniform, finished appearance.

### Easy installation

Our toeboard links can be installed on grating with square, rectangular and I-bar rectangular openings, and don't require hot work permits or scaffolding. The toeboard links can easily be installed from the top-side of the grating. If necessary, the links can be removed just as fast and easy.

### Benefits

- ✓ Increases workplace safety;
- ✓ Safe & effective;
- ✓ Maintenance free;
- ✓ Proven design;
- ✓ Economical;
- ✓ Long service life.

### Material strength and weatherability

Outdoor weatherability is excellent. The material will not degrade in sunlight, and 9-month UV-exposure tests in Arizona and Florida, USA, showed no loss of tensile strength. The safety yellow coloured molded parts are made from a strong, rigid, non-corrosive, UV-resistant polyurethane.

Our toeboard links are supplied with galvanized hardware.



**i** For technical information, measurements and installation instructions, please see the following pages.

### Contact us

Do you want to know more about our products?  
Don't hesitate to contact us!

T +31 114 31 95 31  
E [info@isp-products.com](mailto:info@isp-products.com)  
I [www.isp-products.com](http://www.isp-products.com)

# T5-J DIMENSIONS AND LAYOUTS

## Required number of T5-J

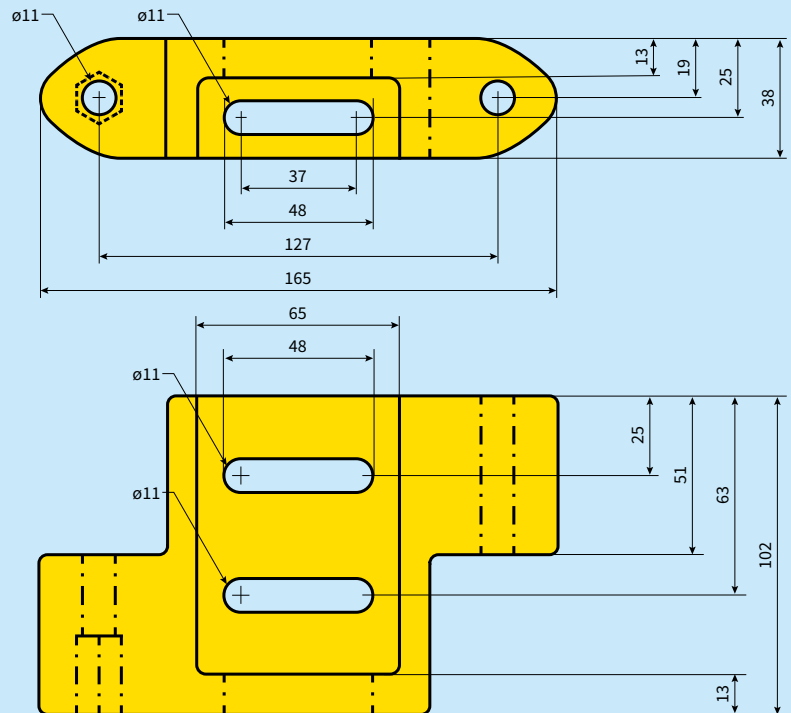
Number of T5-J	Max. inside circle (mm)	Number of T5-J	Max. inside circle (mm)
4	90	10	350
5	135	11	395
6	180	12	425
7	220	13	475
8	265	14	520
9	310	15	560

To calculate T5-J links needed for larger circular enclosures, round up the result of

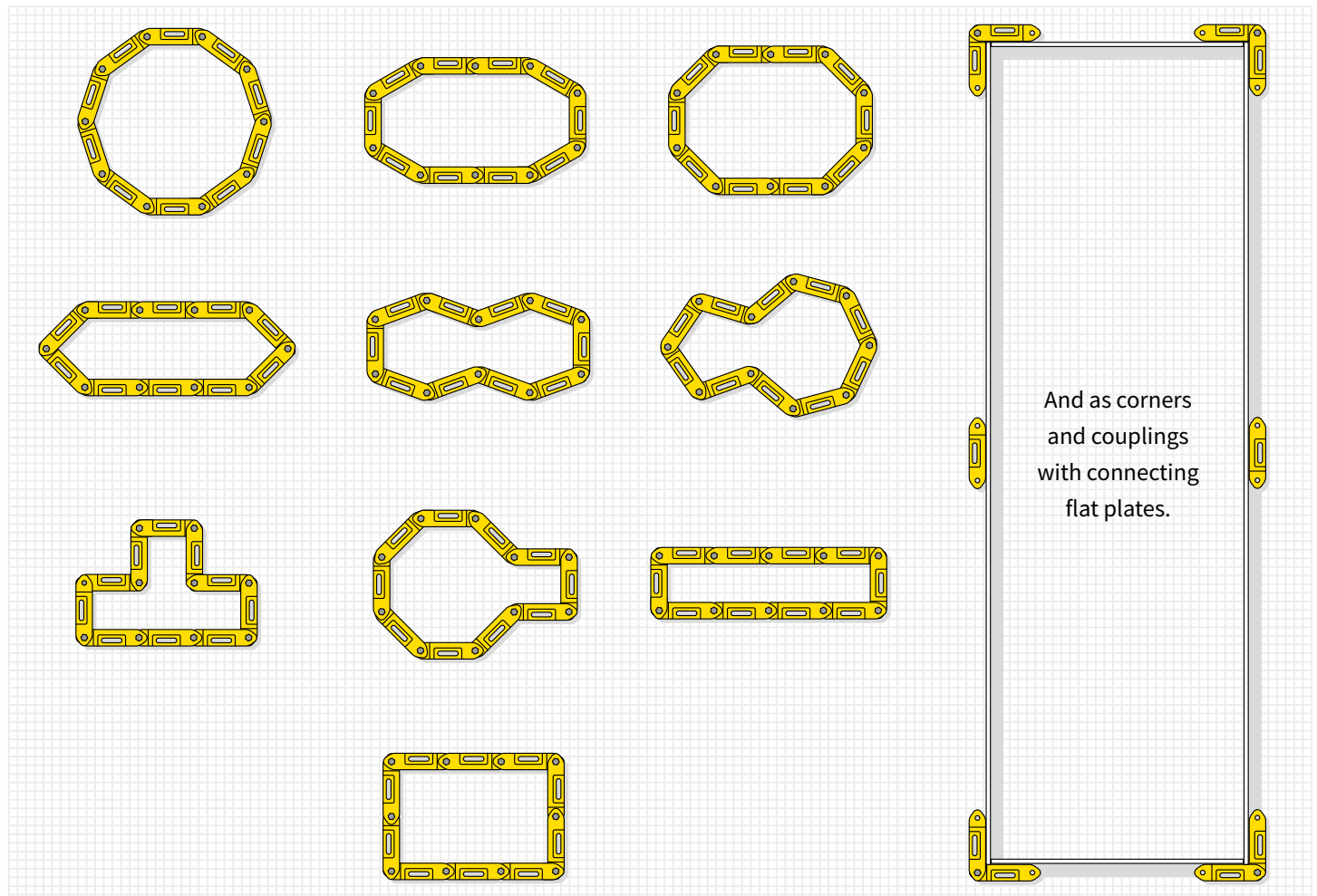
$$\frac{3.14 \times (\text{Ø} + 40)}{127}$$

Or, amount of toeboards needed:  
number of meters/0,127 = amount needed

## T5-J measurements



## 10 examples to use 10 T5-J links





# T5-J INSTALLATION

## Typical installation of the T5-J



Layout the T5-J pieces around the pipe penetration, and insert the  $\frac{3}{8}$ " x  $3\frac{1}{2}$ " long bolts through the connecting holes. Thread them, but do not tighten.



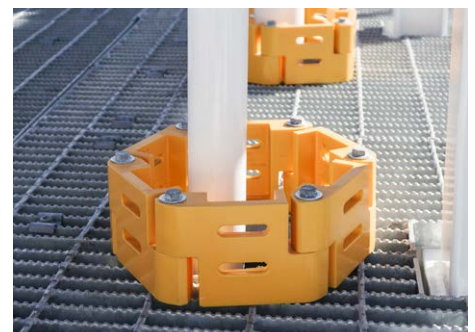
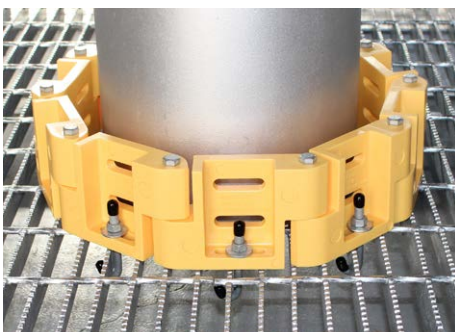
Drop J-bolts in the slots located on the bottom of each T5-J piece. Catch one of the grating bars with the J-bolt and tighten. Do this for all T5-J pieces.



Once all the J-bolts are securely fastened, tighten each of the  $\frac{3}{8}$ " x  $3\frac{1}{2}$ " bolts in the connecting holes.

**⚠** Toeboard links T5-J can be used on square and rectangular openings, but not on I-bar rectangular openings.

## EXAMPLES



### Contact us

Do you want to know more about our products?  
Don't hesitate to contact us!

T +31 114 31 95 31  
E [info@isp-products.com](mailto:info@isp-products.com)  
I [www.isp-products.com](http://www.isp-products.com)